

Scientific partnering to
accelerate therapeutic
breakthroughs.



revvity

Our commitment to being a trusted partner

Revvity works with you to accelerate your research throughout your preclinical drug discovery and development workflow, providing you with the ability for larger capacity and guaranteed quality.



Functional genomic screening

Elucidate gene function and its involvement in biochemical, cellular, and physiological pathways

Immune cell screening

Assess therapeutic efficacy and address clinically relevant questions with primary immune cells

Cell panel screening

Screen compounds in high throughput across cancer cell lines to provide efficacy and toxicity data

Cell Line Engineering

Create cell models to evaluate critical gene function and perform assay development

Access

To products and service development specialists with deep scientific knowledge

Innovation

With a consultative approach, creating solutions for you, with you

Collaboration

With our skilled research team to design your study

Dedication

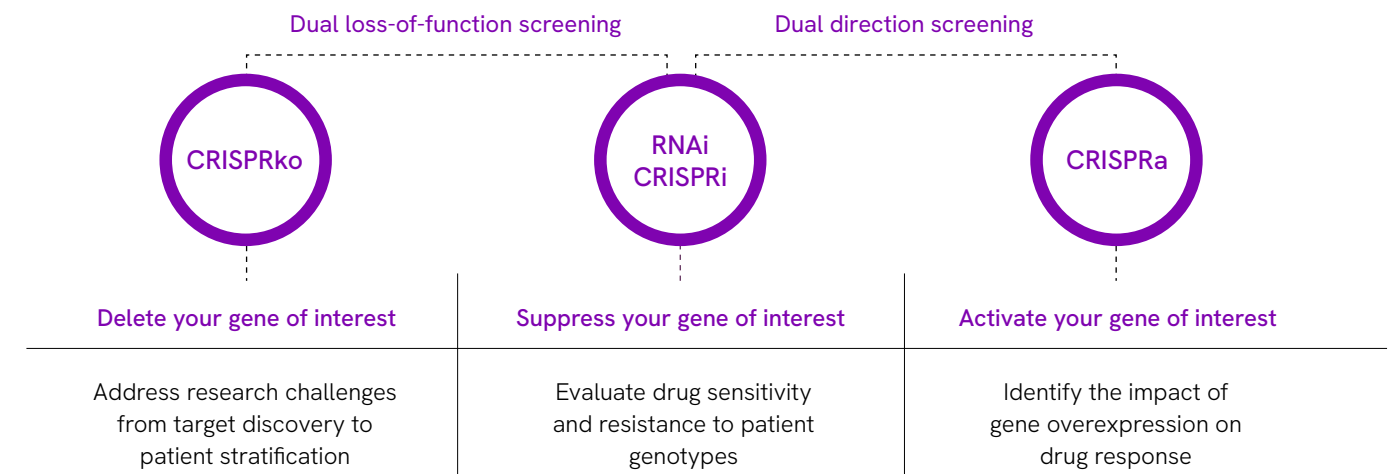
Reducing your time to market



Functional genomics screening

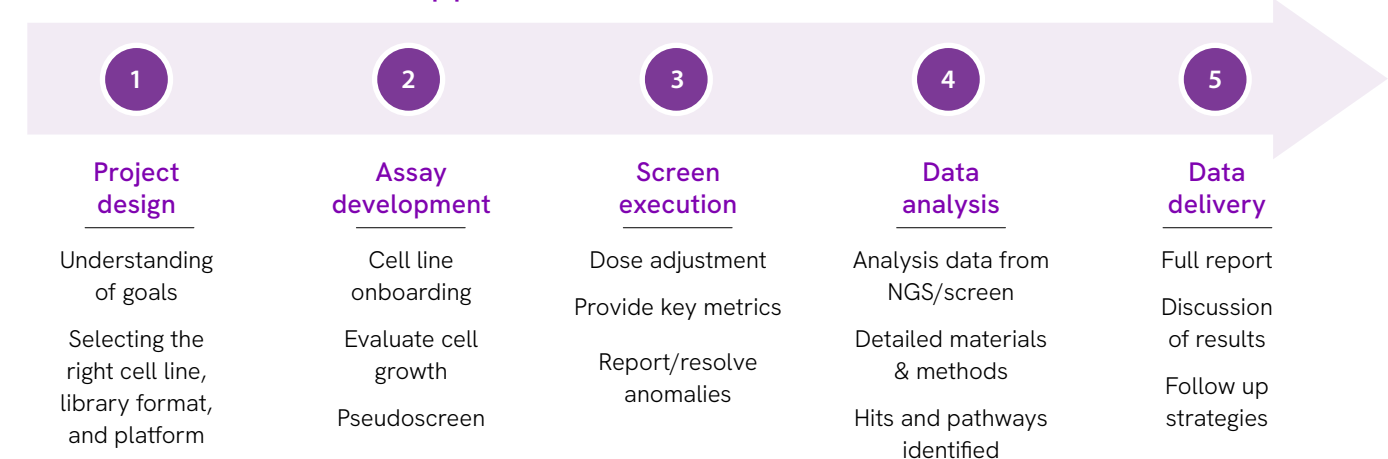
A full service, from experimental design through to data analysis

Leverage Revvity's CRISPRko/a/i screening capabilities to accelerate your discovery research, available in pooled and arrayed formats.



| Pooled screens | Arrayed screens |
|---|---|
| CRISPR ko/i/a | CRISPR ko/i/a and RNAi |
| Single, dual, and combination formats | Synthesize and screen custom oligos |
| Select from pre-evaluated cells or use your model | Complex assay readouts |
| Proliferation and fluorescence readouts | Co-culture screens |
| Genome-wide, gene family, and custom libraries | Genome-wide, gene family, and custom libraries |
| Scalable depth and fold-coverage to meet your needs | Efficiency of multiple reagents per gene per well |

Consultative workflow approach

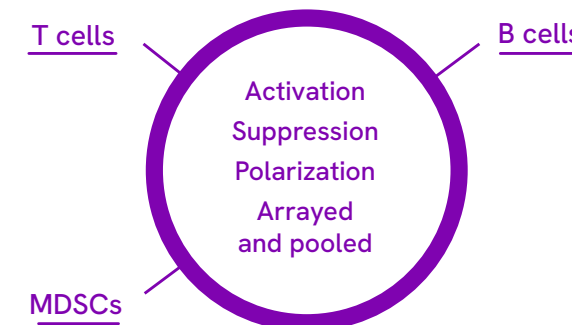




Immune cell screening

Industry leading assays
in primary immune cell types

Access the forefront of immunology research and gain the ability to explore the underlying mechanisms behind immune cell activation and suppression.

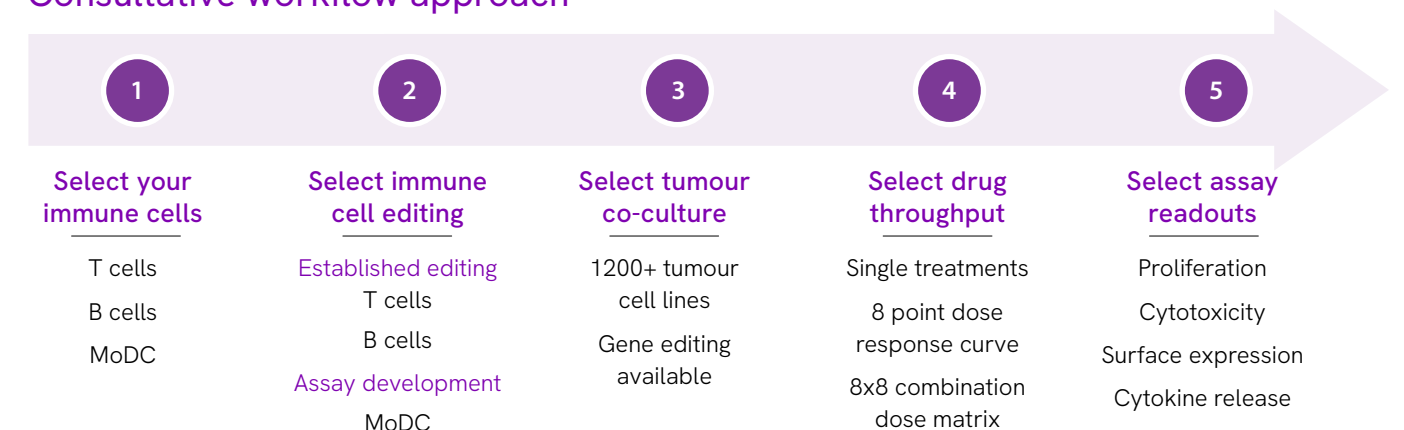


We use primary immune cells from multiple donors, ensuring the cell morphology and cell markers are maintained in vitro allowing you to correlate results in animal models and patient samples.

Evaluate the effect of a specific gene knock out or therapeutic at a functional level with the right high throughput immune assay.

| Cytotoxicity assays | T cell proliferation assays | Immune suppression assays |
|--|--|--|
| Evaluate the action of anti-cancer antibodies and other biologics using a number of different immune cells | Evaluate the action of your drug or combination of drugs on T cell proliferation | Evaluate the action of your drug or combination of drugs on the suppression of normal T cell by suppressive immune cells |
| CDC | MLR | Treg / MDSC |
| T cell mediated tumour cell lysis | T Cell Activation Assay | |

Consultative workflow approach





Cell panel screening

Driving translational biology

OncoSignature™, is our cell line rotation platform that gives you access to our cost effective, time sensitive cell panel screening platform.

Cell line collection

2D OncoSignature™ 300 cell lines
18 tissue indications

3D OncoSignature™ 200 cell lines
17 tissue indications

Single drug screening or combination drug screening

Up to 40 single agents
Accommodates diverse therapeutic modalities

Up to 12 combination drugs
1 treatment point up to 6 days

Large Biologic

Small Biologic

Small Molecules

Diverse Solvents

Viability assay

Incorporates T₀ controls for GI₅₀ calculation to discriminate cytotoxic vs. cytostatic effects

| | | | | | | | | |
|-----|-----|-----|-----|-----|-----|-----|-----|-----|
| 109 | 140 | 156 | 167 | 176 | 190 | 195 | 199 | 200 |
| 77 | 93 | 97 | 102 | 124 | 155 | 182 | 191 | 200 |
| 77 | 90 | 94 | 96 | 117 | 148 | 174 | 190 | 200 |
| 65 | 85 | 80 | 92 | 97 | 128 | 161 | 188 | 199 |
| 52 | 75 | 82 | 88 | 95 | 110 | 153 | 180 | 198 |
| 37 | 63 | 78 | 84 | 91 | 103 | 138 | 171 | 195 |
| 29 | 60 | 74 | 76 | 85 | 92 | 106 | 157 | 191 |
| 16 | 59 | 62 | 66 | 76 | 84 | 94 | 129 | 172 |
| - | 36 | 51 | 56 | 62 | 71 | 80 | 89 | 125 |

Growth Inhibition (%) N=2

Growth Inhibition (GI₅₀)

Build a screen that fits your needs

Various assay formats

Synthetic RNAs

Flexible endpoints

Combination screening with up to 350 compounds

Extended 350 oncology-relevant cell line library for 2D

Over 4000 HAP1 Knock out cell lines

On-board your own cell lines

Client-sourced organoid screens

Consultative workflow approach

1

2

3

4

5

Contact us

Discuss your needs with our team

Scalable pricing model

Project design

Select your cell lines

Select your combinations

Choose assay formats and endpoints

Screen execution

Monthly data reports

Tracked on LIMS

STR authenticated cell line bank

Data delivery

Results in 4 months

Comprehensive data pack

Chalice™ data analysis software provided

Bioinformatics

Options available for additional bioinformatics



Cell line engineering

Work in biologically and clinically relevant cell backgrounds

Affordable cell line engineering allows you to focus on the most critical aspects of your research project - delivering accurate data and publishing reliable results.

From standard knockouts to challenging cell lines such as iPSCs and primary cells, Revvity can support you.

Your edit, our expertise

| Knockouts delivered in as little as 12 weeks | |
|--|---|
| Service | Benefits |
| Standard Knockouts | Invoice on delivery |
| Double Knockouts | Single knockout clones included |
| Cas9 expressing stable lines | Pooled or clonal format |
| Knock-ins delivered in as little as 14 weeks | |
| Single nucleotide polymorphisms (SNP) knock-ins | <ul style="list-style-type: none">▪ Invoice on delivery▪ Customer defined zygosity requirements - at additional cost |
| Tag knock-ins | <ul style="list-style-type: none">▪ His, FLAG, or Myc▪ Defined, N-terminal or C-terminal insert location |
| Reporter knock-ins | <ul style="list-style-type: none">▪ Turbo GFP (Evrogen), Turbo RFP (Evrogen), or other fluorescent reporters▪ HiBit, LgBit, NanoLUC insertions▪ Defined, N-terminal or C-terminal insert location |
| Unique projects - delivered in as little as 12 weeks | |
| iPSC editing | <ul style="list-style-type: none">▪ Rely on our vast knowledge and expertise▪ Zero fees for onboarding customer provided cell line |
| Can't see your required options? For any complex edits not defined above - contact us for price and timeline. We can perform just about any edit in any cell line. | |

Standard deliverables

- Up to 2 clones with sequence verification
- Parental cell lines
- Full IP coverage for R&D Revvity's CRISPR licenses
- Sterility testing
- Mycoplasma testing
- Summary project report
- Functional verification for Cas9 stable and reporter cell line projects

Add-ons

- Delivery of additional clones
- Larger screen sizes
- Delivery of the edited pool for standard knockout projects

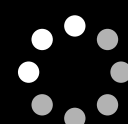


Our promise to deliver excellence



Consultation

Our world-class team of scientists ready to consult and advise on your most complex screening projects



Progress updates

Project managers to provide frequent updates, along with project scientists to recommend next steps and paths forward



Delivery

Data delivery shared in formats amenable to your studies



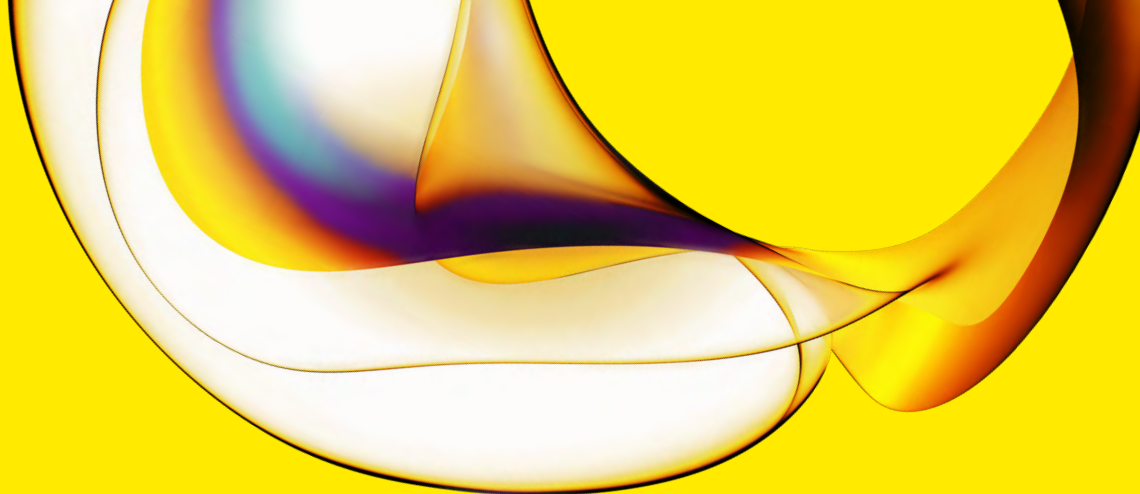
Discussions

In-depth data discussions with our teams



Follow up on your hits

Leverage library-matched catalog gene-specific reagents for easy hit confirmation



www.revvity.com

revvity

Revvity, Inc.
940 Winter Street
Waltham, MA 02451 USA
www.revvity.com

For a complete listing of our global offices, visit www.revvity.com
Copyright ©2023, Revvity, Inc. All rights reserved.

1165378