



horizon
a PerkinElmer company

CHOSOURCE™ Expression Platform

Empowering biotherapeutic production

Building upon more than a decade of experience in cell line engineering, Horizon Discovery continues to expand the CHOSOURCE™ Expression Platform to bring you the right tool for the job

Fully documented traceable history of R&D and manufacture of the CHOSOURCE™ Cell Lines

Optimized instructions at every step from transfection, selection, dilution cloning and cryopreservation



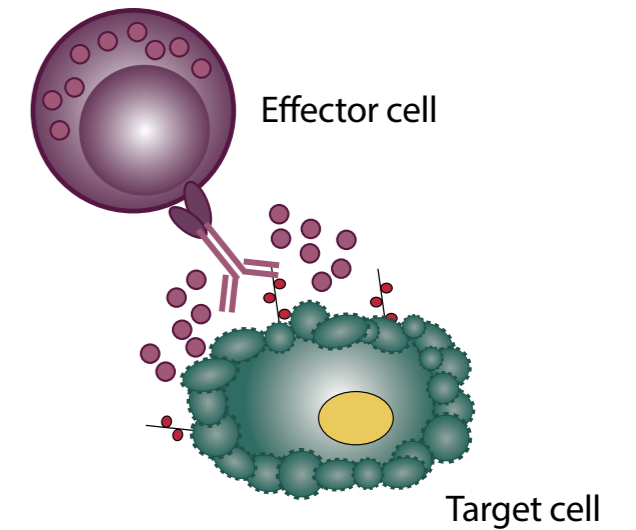
>100 Licenses sold worldwide
>20 Regulatory Submissions*

Comprehensive Cell Line History Package & Protocols

Freedom to Choose
Any media, vector or CRO/CMO

Freedom to Operate
No intellectual property or patent risks

CHOSOURCE™
Expression Platform
Industry recognised GS selection generated with precision



Fully Afucosylated Antibodies

Proven Performance

CHO-KI GS KO Cell Line

CHO-K1 ADCC+ Cell Line

Develop the full range of therapeutics
Human & Animal / Vaccines / Diagnostics

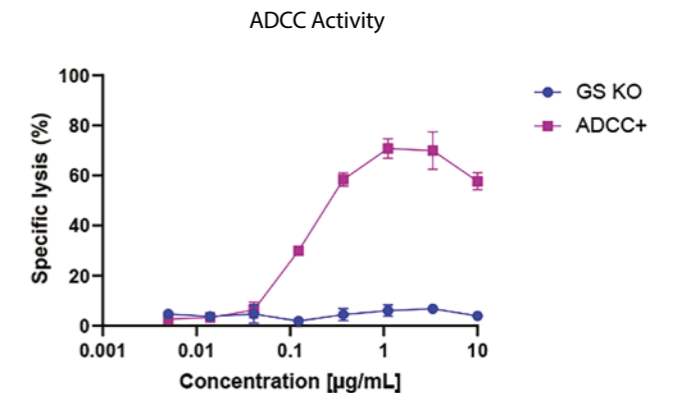
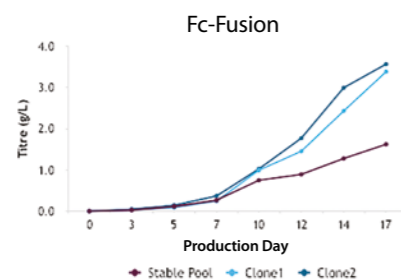
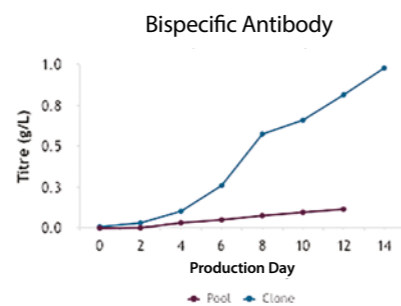
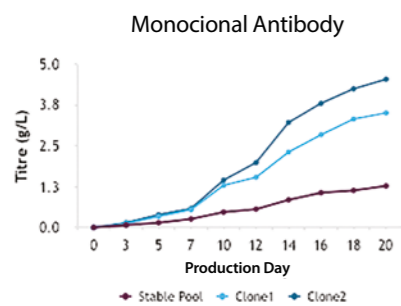
Increase therapeutic efficacy of antibodies
Oncology / Anti-infection / Auto-immune Disease

Royalty Free Licensing
Maintain Product Profitability

Flexible Licensing
Simple, royalty-free licensing helps maintain profitability

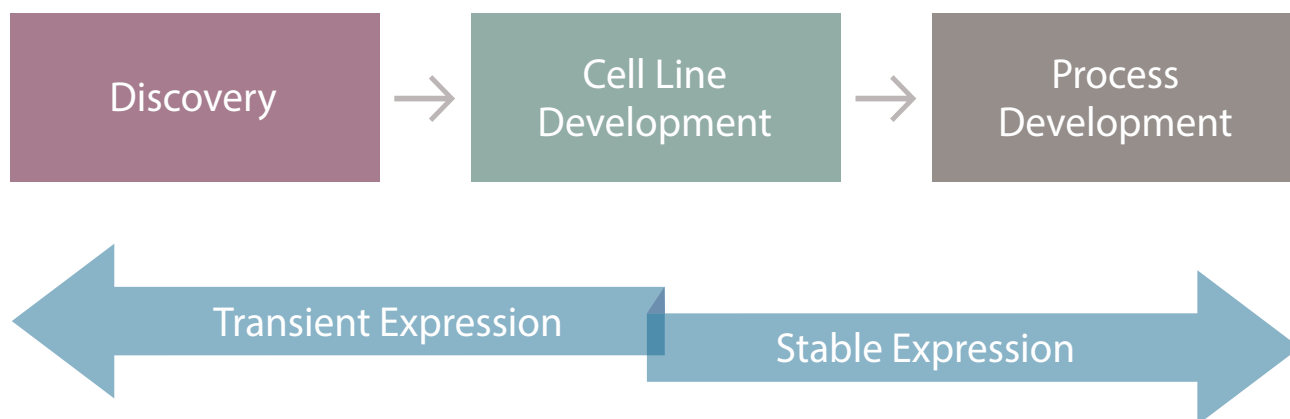
Dual Promoter Expression Vector

Enables expression of entire mAb from single vector



Accelerate lead discovery & cell line development

Use the same CHOSOURCE™ Cell Line for transient and stable expression. Save time, costs and reduce your validation burden.



Dedicated global support team

A highly experienced and knowledgeable CHOSOURCE™ team

will be able to answer any queries about our products, services and applications. We will provide any assistance and technical support required to meet your needs

Commercial support:

- Regional Strategic Account Managers
- Product Manager

Technical support:

- Field Applications Scientist (pre- and post-sales support)
- Project Management
- Regulatory Support

Contact us

t +44 (0)1223 976 160 (UK) or +1 800 235 9880 (USA); +1 303 604 9499 (USA)

f +44 (0)1223 655 581 e bioproduction@horizondiscovery.com w horizondiscovery.com/contact-us

Horizon Discovery, 8100 Cambridge Research Park, Waterbeach, Cambridge CB25 9TL, United Kingdom

©2021 The Horizon logo, CHOSOURCE, and other trademarks are the property of Horizon Discovery Limited, unless otherwise stated. DHARMACON is a trademark of Dharmacon Inc.

