

CRISPR
and **RNAi**
specialists

Cell-based Screening Services

From consultation to delivery

Target ID / MoA studies / Drug profiling

Trusted by
Top 20
Pharma

Partnering with you

From target identification to patient stratification

Options for
dual CRISPRi/a
or dual KO
screens

Identify and characterize therapeutic targets and biomarkers

Functional genomic screening

Determine relevant gene function,
investigate gene–drug interactions

- Screen in pooled or arrayed format
- Screen using any cell line or primary immune cells
- Screen the whole genome or your preferred subset of genes
- Ensure data quality—generated using the latest CRISPR or RNAi reagents
- Receive a ‘hit list’ of genes for further investigation

Identify cells that respond to your candidate therapeutic

Cell panel screening

Screen in 2D and 3D models (spheroids
or organoids)

- Select from a bank of standard or genetically-modified cancer cell lines or send us your cell lines
- Benchmark against a library of standard-of-care compounds
- Identify enhancers of your therapeutic using combination screening
- Select conditions that mimic a tumor micro-environment
- Select from a range of endpoint assays

Prefer to begin in-house?

Visit www.horizondiscovery.com
for catalog and customized screening libraries
by Dharmacon™

To discuss your requirements,
request a consultation via
sales@horizondiscovery.com
or contact your Horizon representative



HORIZON DISCOVERY SCIENTISTS WERE DILIGENT AND HIGHLY COLLABORATIVE, ENSURING A SUCCESSFUL SCREEN. THANKS AGAIN HORIZON.

Oncology Project Leadership, Biotech company, Boston, USA

Determine therapeutic efficacy in immune cell-based environments

Immune cell-based assays

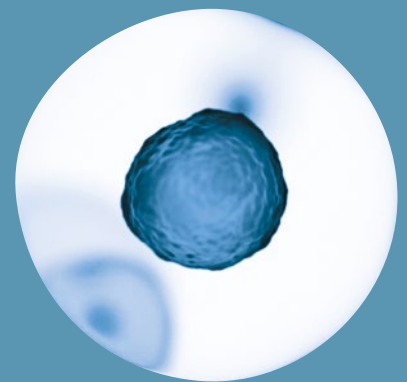
Understand MoA, test biosimilars or identify biomarkers

- Evaluate in a range of assays in primary:
 - T cells
 - B cells
 - NK cells
 - Monocyte-derived dendritic cells (MoDC)
 - Myeloid-derived suppressor cells (MDSC)
 - Macrophages
- Select from a range of endpoint assays
- Fully compatible with any CRISPR or RNAi screening project in primary immune cells

Developing a biotherapeutic?

Benefit from functional genomic screening to optimize your CHO cell line for bioproduction

The cell lies at the heart of everything we do



Our tools and services enable scientists to

- Gain a greater understanding of gene function
- Identify genetic drivers behind human disease
- Deliver biotherapeutics, cellular and gene therapies for precision medicine
- Develop and validate diagnostic workflows

Powered by decades of experience

About Horizon

With more than a decade of experience in cell line engineering, Horizon Discovery excels in the application of gene editing and gene modulation. The company provides innovative tools and services to help identify genetic drivers behind disease, develop and validate diagnostic workflows, and deliver new therapies for precision medicine.



Contact us

t +44 (0)1223 976 160 (UK) **or** +1 800 235 9880 (USA); +1 303 604 9499 (USA)

f +44 (0)1223 655 581 **e** info@horizondiscovery.com **w** horizondiscovery.com/contact-us

Horizon Discovery, 8100 Cambridge Research Park, Waterbeach, Cambridge CB25 9TL, United Kingdom

©2020 The Horizon logo and other trademarks are the property of Horizon Discovery Limited, unless otherwise stated. DHARMACON is a trademark of Dharmacon Inc.

